



Projects Update

April 26, 2021

Bond 2017 Project:
Leadership Support Center

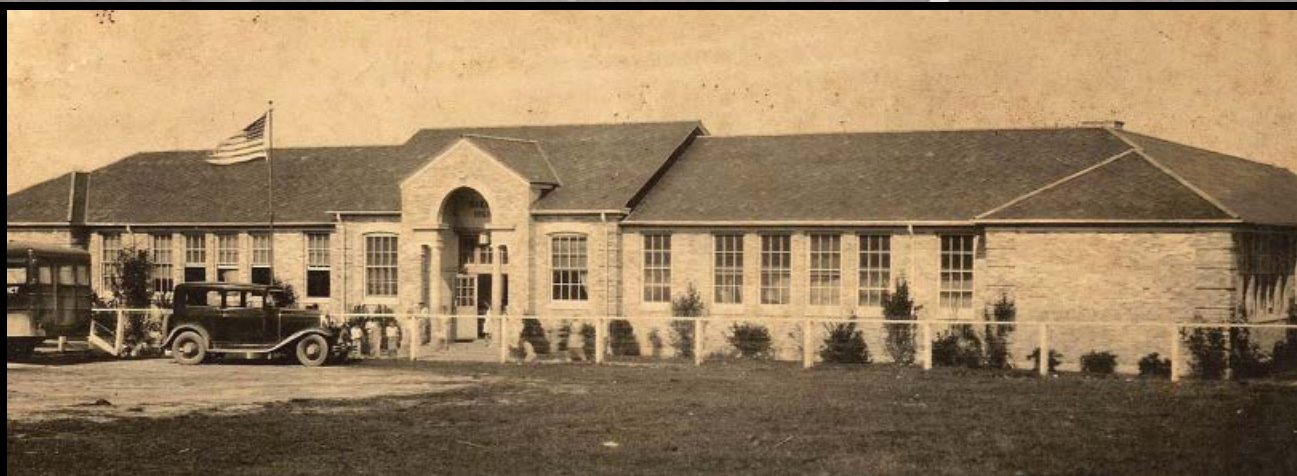
Bond 2020 Projects:
ES North Classroom Addition
ES South Classroom Addition

Bond 2020 Projects:
Intermediate School North
Intermediate School South



FRONT RENDERING

LEADERSHIP SUPPORT CENTER BOND 2017



PROJECT SCHEDULE

COMPLETE - Package 1: Demolition, Earthwork, Building Pad and Underground Utilities

- Demolition – Complete

January 15th – March 15th 2020

COMPLETE - Package 2: Foundation, Structural Steel Purchase and MEP Underslab

- Building Pad: Completed on Schedule:
- Drill & Pour Foundation Piers/Grade Beams Complete:
 - *PCI to give status update of project time line*

Package 3: Remaining Building Package

- Construction Documents Issue for Proposal: Complete April 6th 2020
- Issue for Permit: Complete April 9th 2020
- Develop GMP present to BOT for Approval/Award: Complete May 18th 2020
- *Construction Start - Substantial Completion:* May 19th 2020 - June 15th 2021
- Move – In: July 15th 2021



BOND 2017 – LEADERSHIP SUPPORT CENTER



BOND 2017 – LEADERSHIP SUPPORT CENTER



BOND 2017 – LEADERSHIP SUPPORT CENTER



LSC – Front Exterior Elevation - Main Lobby Entrance

BOND 2017 – LEADERSHIP SUPPORT CENTER



BOND 2017 – LEADERSHIP SUPPORT CENTER



BOND 2017 – LEADERSHIP SUPPORT CENTER



HALL OF HISTORY



BACK OF BUILDING RENDERING

BOND 2017 – LEADERSHIP SUPPORT CENTER



BOND 2017 – LEADERSHIP SUPPORT CENTER



LSC – Hall of History Gyp. Board Tape and Float, Electrical Installations in Progress

OFFICE PORTAL ENTRY RENDERING



FINANCE

BOND 2017 – LEADERSHIP SUPPORT CENTER



ELEMENTARY SCHOOL SOUTH CLASSROOM - LIBRARY ADDITIONS



ESS CLASSROOM ADDITION RENDERING



ESS CLASSROOM ADDITIONS PROGRESS

ELEMENTARY SCHOOL SOUTH CLASSROOM - LIBRARY ADDITIONS



Area B - Classroom Wing - Brick

ELEMENTARY SCHOOL SOUTH CLASSROOM - LIBRARY ADDITIONS



Area B – Typical Classroom Paint, Ceiling Grid and Lights

ELEMENTARY SCHOOL SOUTH CLASSROOM - LIBRARY ADDITION



ESS LIBRARY ADDITION RENDERING

LIBRARY

ART ROOM



ESS ART ROOM ADDITION RENDERING

ESS LIBRARY ADDITION



ESS ART ROOM ADDITION PROGRESS

ELEMENTARY SCHOOL SOUTH CLASSROOM - LIBRARY ADDITIONS



ELEMENTARY SCHOOL SOUTH CLASSROOM - LIBRARY ADDITIONS



ELEMENTARY SCHOOL SOUTH CLASSROOM - LIBRARY ADDITIONS



Area C - Library Paint, Ceiling Grid and Lights

ELEMENTARY SCHOOL SOUTH CLASSROOM - LIBRARY ADDITION



Area C - Library Paint, Ceiling Grid and Lights

ELEMENTARY SCHOOL NORTH CLASSROOM ADDITIONS



ELEMENTARY NORTH ADDITIONS

BOND 2020 ESN CLASSROOM ADDITIONS



Classroom Addition East Side

ELEMENTARY NORTH NEW ADDITIONS

ELEMENTARY SCHOOL NORTH CLASSROOM ADDITIONS



ELEMENTARY SCHOOL NORTH CLASSROOM ADDITIONS



ELEMENTARY SCHOOL NORTH CLASSROOM ADDITIONS



ELEMENTARY SCHOOL NORTH CLASSROOM ADDITIONS



ELEMENTARY SCHOOL NORTH CLASSROOM ADDITIONS



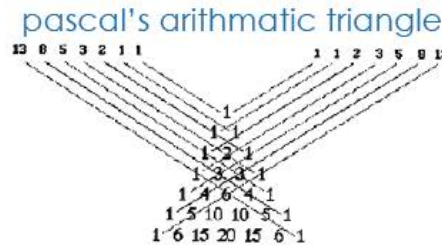
BOND 2020 INTERMEDIATE SCHOOL NORTH



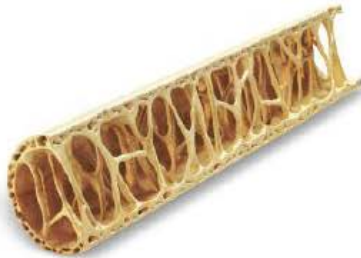
FRONT RENDERING

BOND 2020 INTERMEDIATE SCHOOL NORTH

EAGLE'S nest



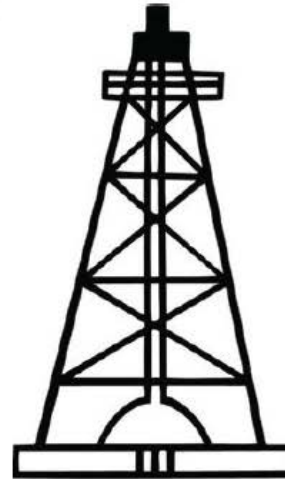
aleatory
architecture



industrious

"We know the truth, not only by the reason, but also by the heart."

-Blaise Pascal



dynamic educational process + students

—

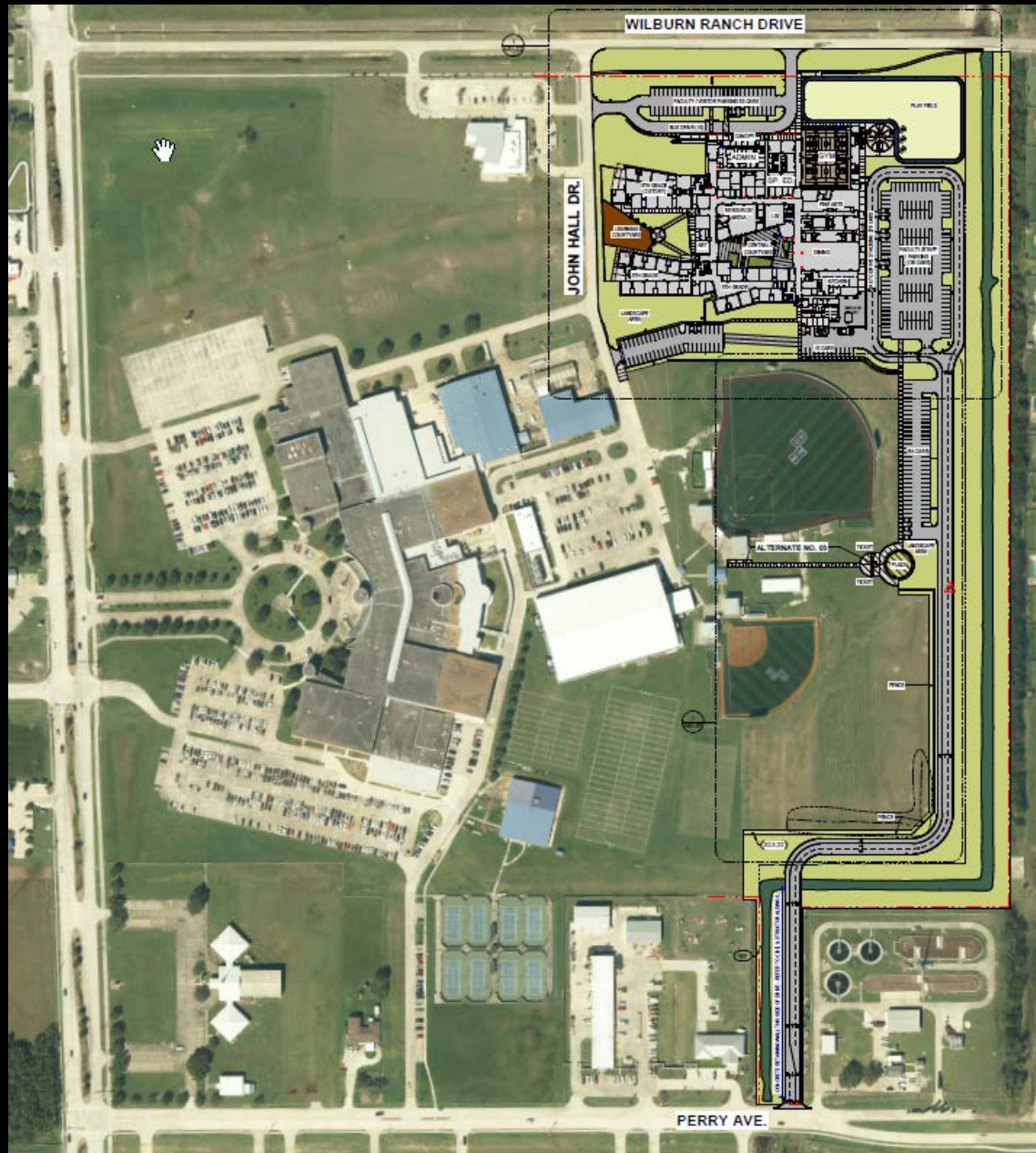
well-rounded product of
exceptionally educated,
individually focused citizens
(a well developed metamaterial)

**BARBERS HILL INTERMEDIATE** north

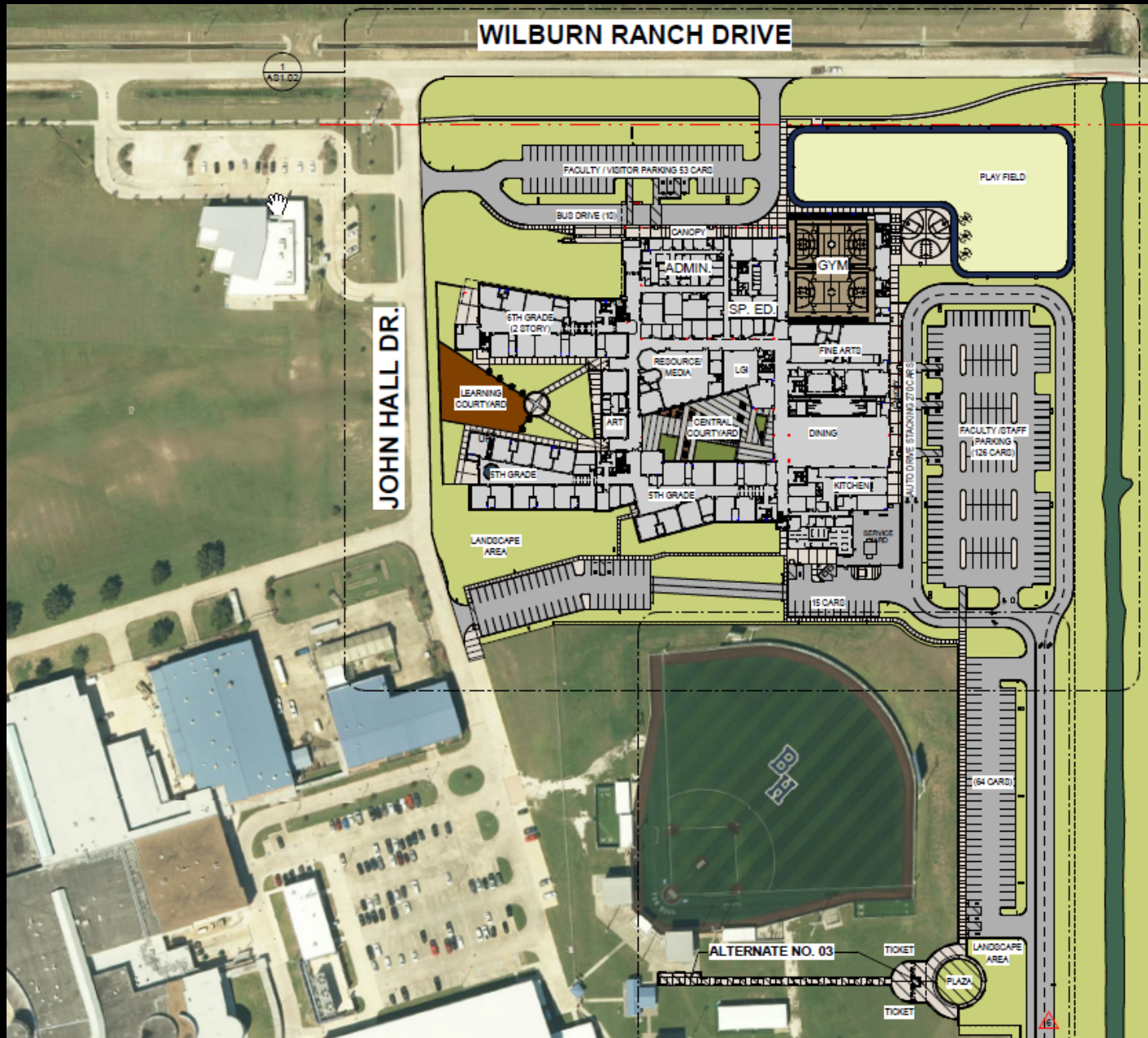
ISN BUILDING DESIGN THEME – EAGLE’S NEST

Independent School District

BOND 2020 INTERMEDIATE SCHOOL NORTH



BOND 2020 INTERMEDIATE SCHOOL NORTH

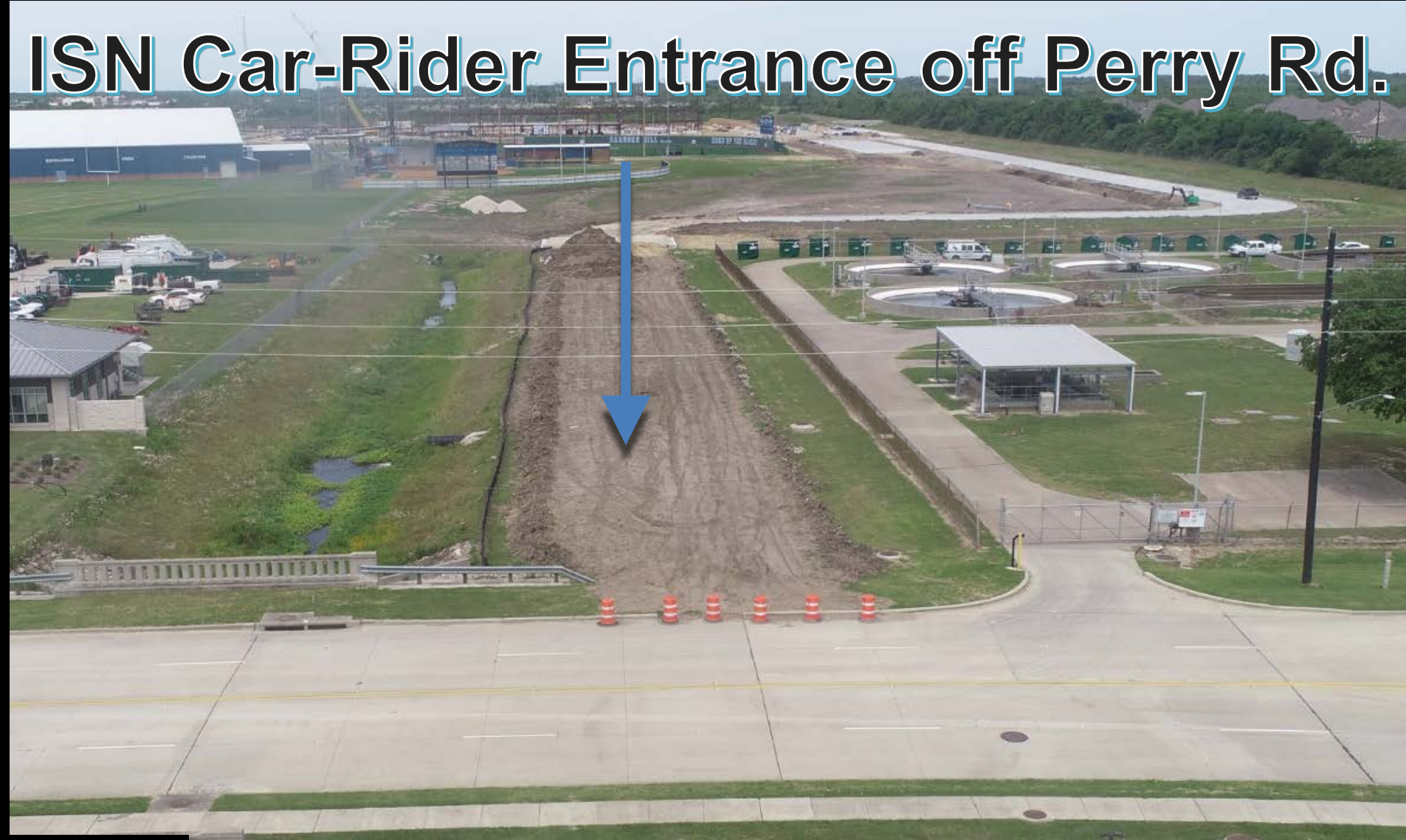


BOND 2020 INTERMEDIATE SCHOOL NORTH



BUILDING RENDERING

ISN Car-Rider Entrance off Perry Rd.



BOND 2020 – INTERMEDIATE SCHOOL NORTH



BOND 2020 – INTERMEDIATE SCHOOL NORTH



BOND 2020 – INTERMEDIATE SCHOOL NORTH



BOND 2020 – INTERMEDIATE SCHOOL NORTH



BOND 2020 – INTERMEDIATE SCHOOL NORTH



BOND 2020 – INTERMEDIATE SCHOOL NORTH



BOND 2020 – INTERMEDIATE SCHOOL NORTH



BOND 2020 – INTERMEDIATE SCHOOL SOUTH - SITE PLAN

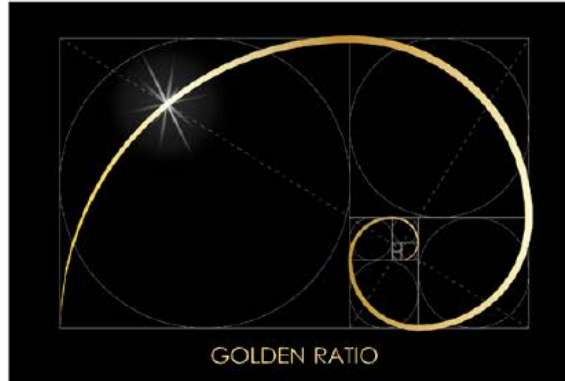


INTERMEDIATE SCHOOL SOUTH



BOND 2020 INTERMEDIATE SCHOOL SOUTH

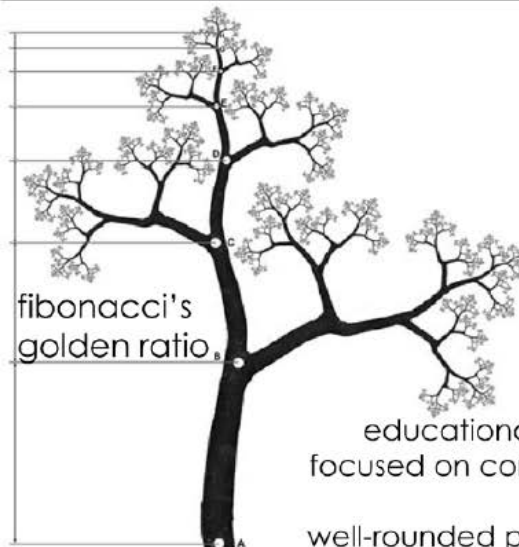
EAGLE'S perch



connected

"Learn how to see. Realize that everything connects to everything else."

-Leonardo da Vinci



BARBERS HILL INTERMEDIATE south

ISS BUILDING DESIGN THEME – EAGLE'S PERCH

Independent School District

BOND 2020 INTERMEDIATE SCHOOL SOUTH



BUILDING RENDERING

FM 565 EAST

**GILL PARKWAY
(PERRY ROAD)**

The image is an aerial photograph of a campus area, likely the University of North Alabama. It features a large parking lot on the left, a central area with various buildings and green spaces, and a road on the right. Two blue arrows point from the text labels to specific locations on the map. The first arrow points from 'FM 565 EAST' to a road on the right side of the image. The second arrow points from 'GILL PARKWAY (PERRY ROAD)' to a road that runs horizontally across the middle of the image, just below the parking lot. The map includes various labels for buildings, parking areas, and other campus features.

BOND 2020 – INTERMEDIATE SCHOOL SOUTH





BOND 2020 – INTERMEDIATE SCHOOL SOUTH



BOND 2020 – INTERMEDIATE SCHOOL SOUTH



BOND 2020 – INTERMEDIATE SCHOOL SOUTH



BOND 2020 – INTERMEDIATE SCHOOL SOUTH



BOND 2020 – INTERMEDIATE SCHOOL SOUTH



BOND 2020 – INTERMEDIATE SCHOOL SOUTH



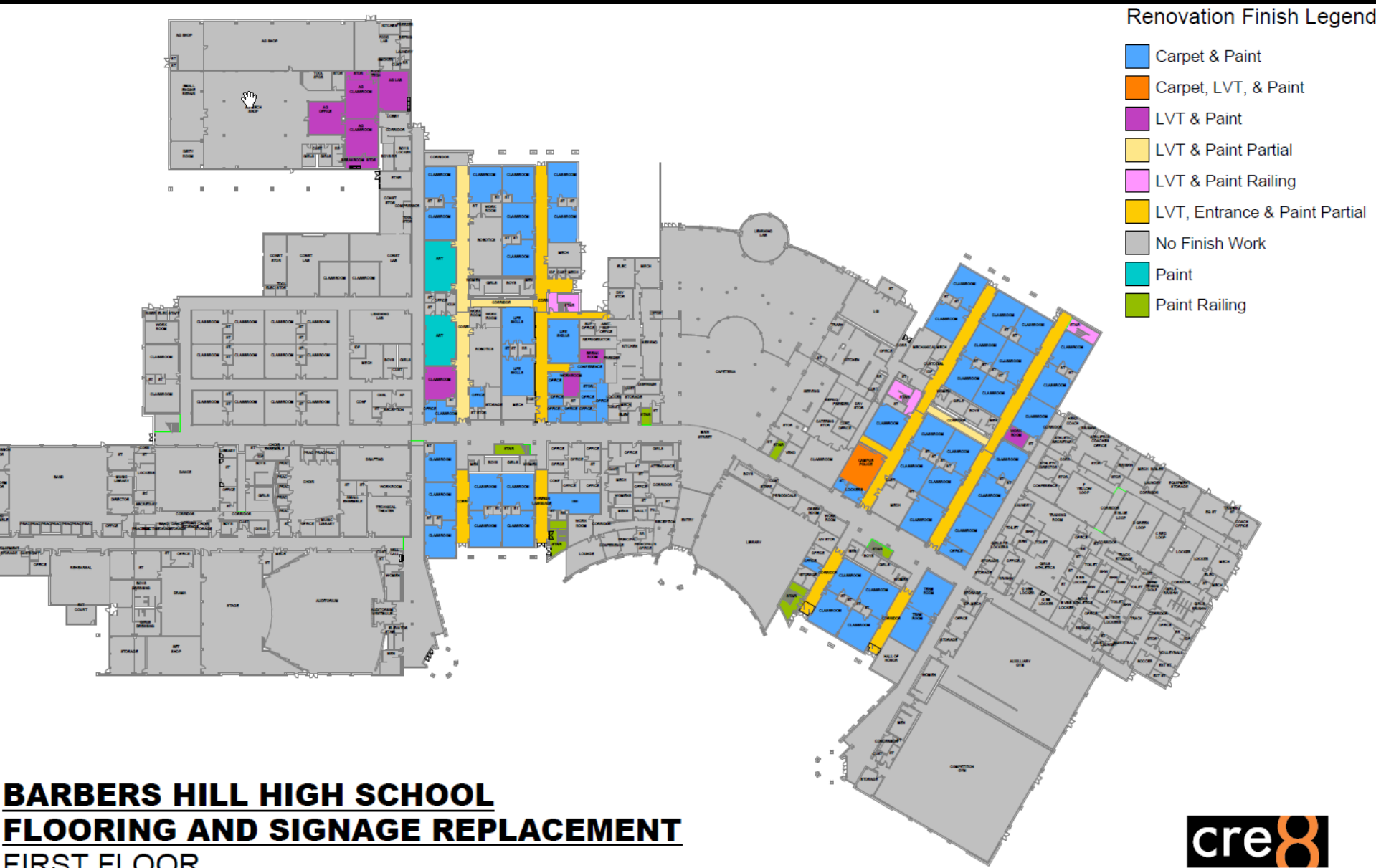
BOND 2020 – INTERMEDIATE SCHOOL SOUTH



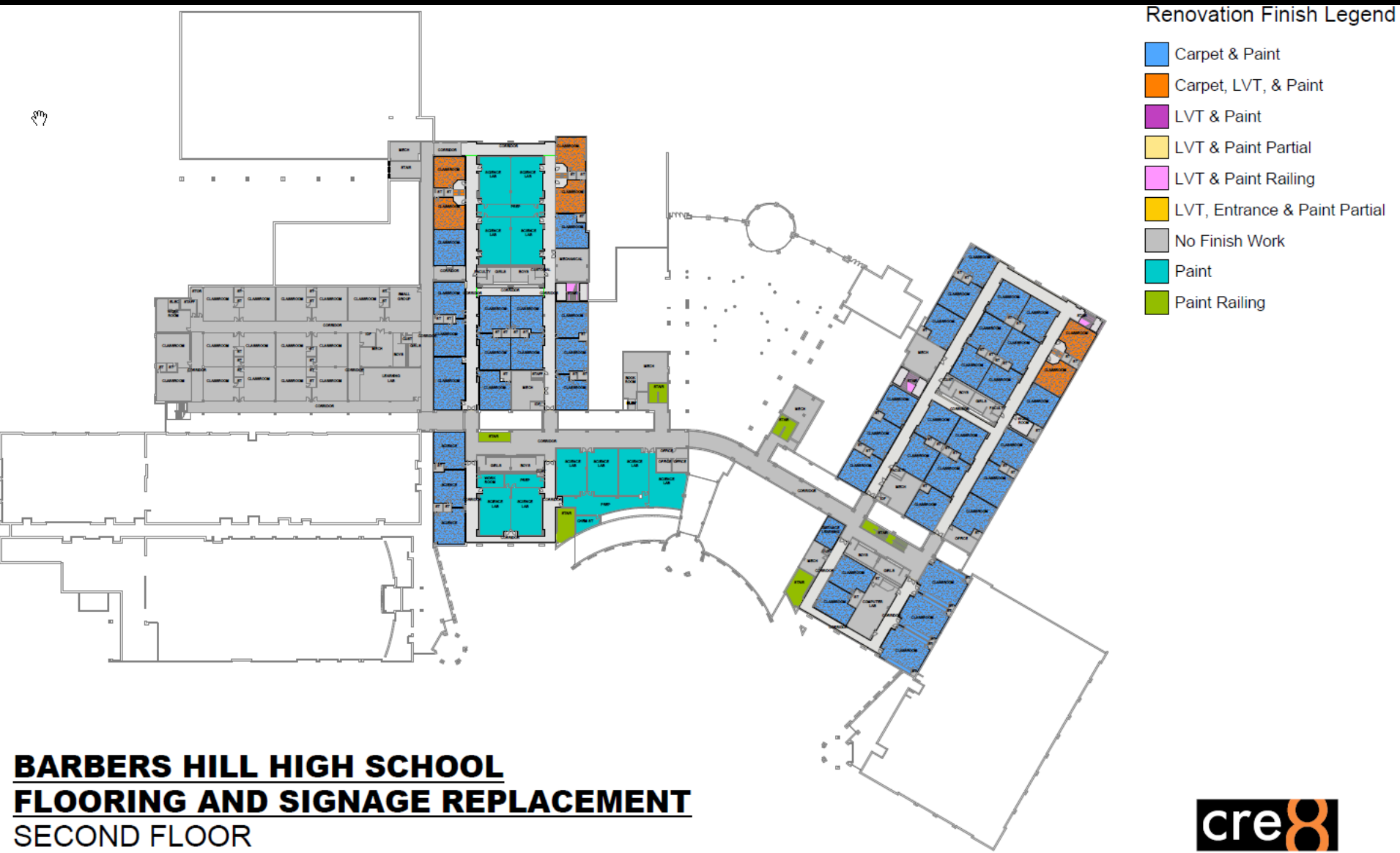
BOND 2020 – ACTION ITEM HS PRACTICE FIELD EXPANSION



BOND 2020 – ACTION ITEM HS FINISHES RENOVATION TO ORIGINAL BUILDING SECTIONS – SCOPE OF WORK 1ST FLOOR:



BOND 2020 – ACTION ITEM HS FINISHES RENOVATION TO ORIGINAL BUILDING SECTIONS – SCOPE OF WORK 2ND FLOOR



ARCHITECTS

Independent School District

THE END

THANK YOU!

cre8
ARCHITECT