



# Projects Update

**September 28, 2020**

## Bond 2017 Project:

Leadership Support Center

## Bond 2020 Projects:

ES North Classroom Addition

ES South Classroom Addition

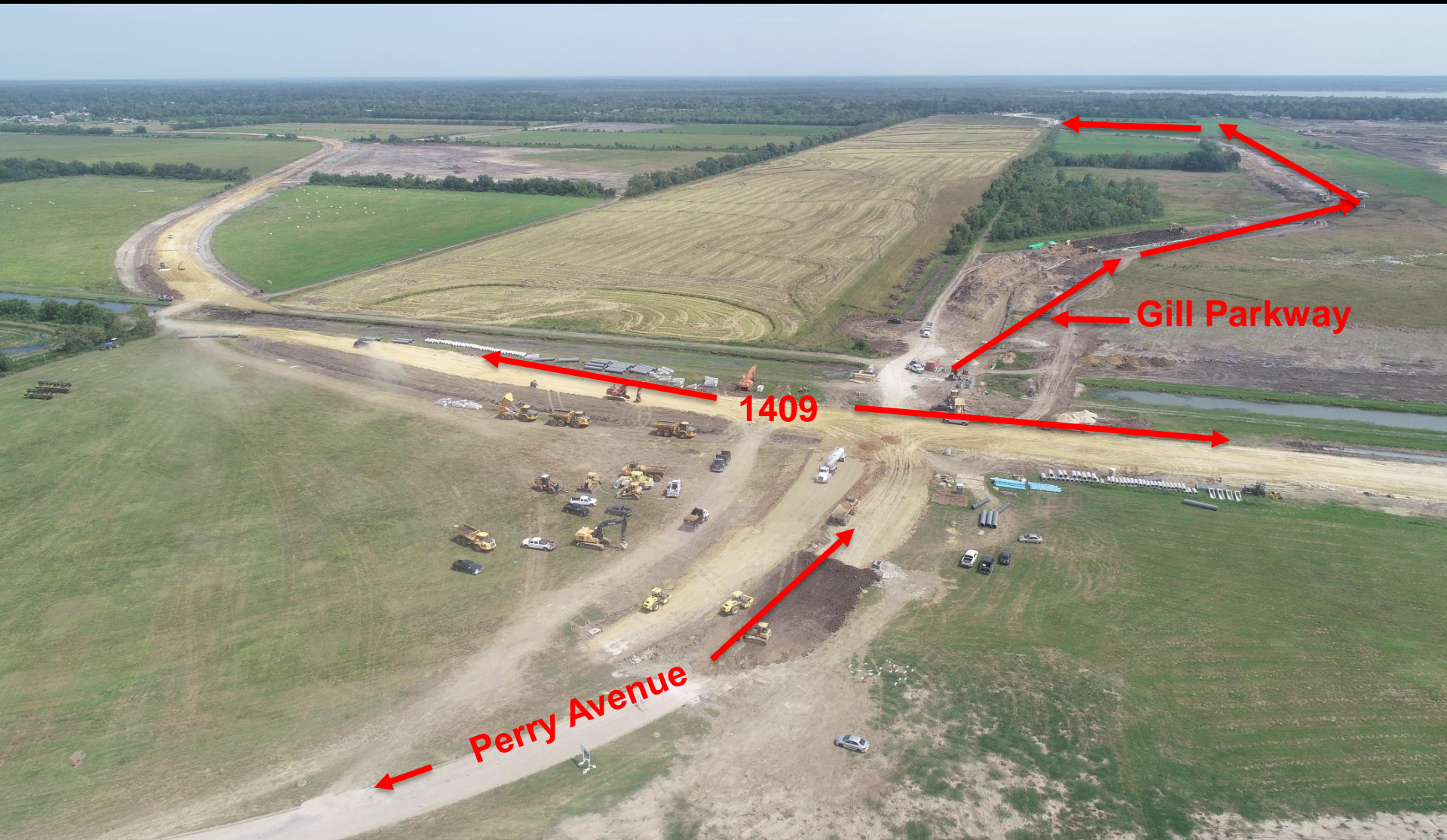
Intermediate School North

Intermediate School South





# Perry Avenue – Gill Parkway Road Progress

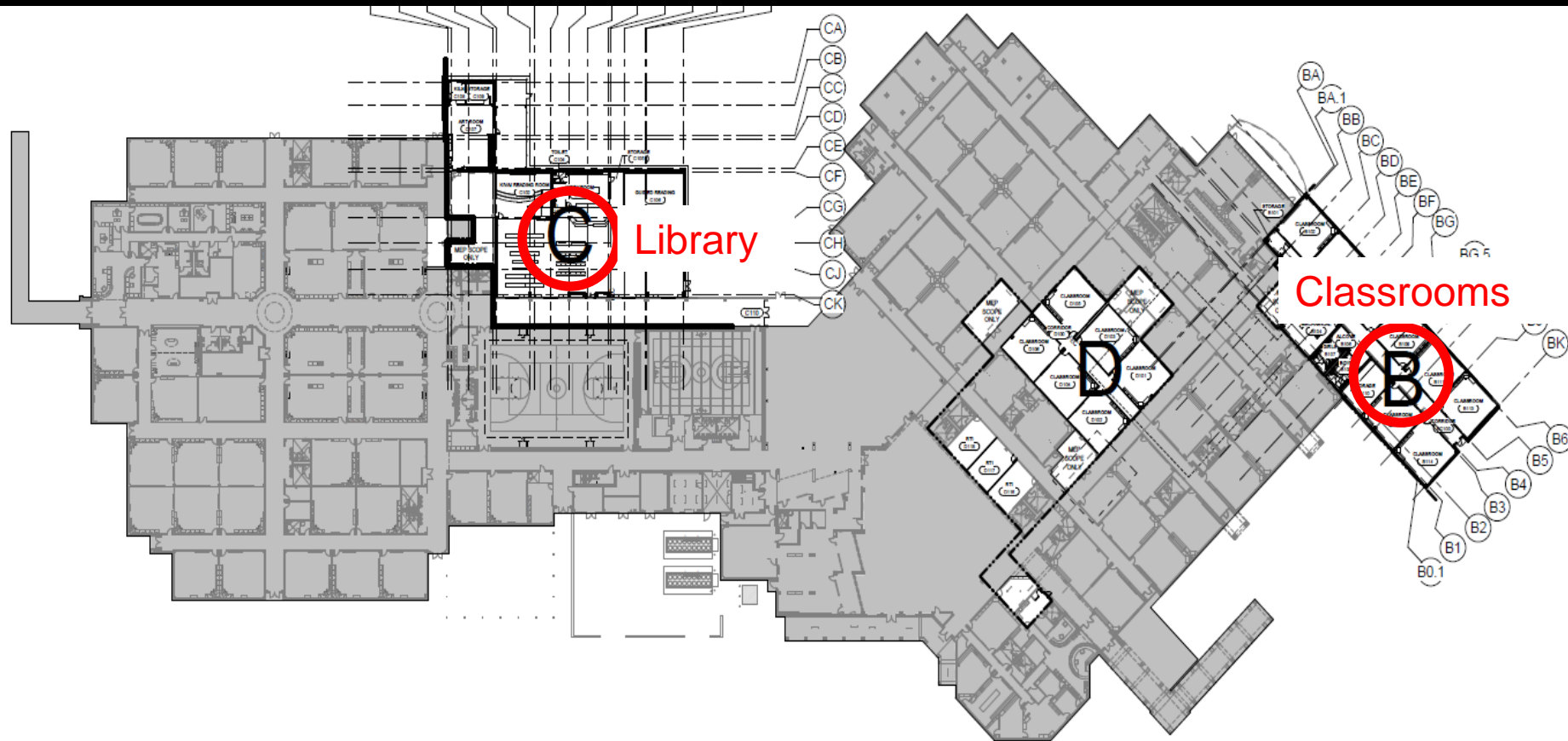




# Perry Avenue – Gill Parkway Road Progress



# ELEMENTARY SCHOOL SOUTH CLASSROOM - LIBRARY ADDITIONS



## PHASING SCHEDULE

PHASE 1: AREA B & C  
WORK TO BEGIN SUMMER 2020

PHASE 2: AREA D  
WORK TO BEGIN SUMMER 2021



# ELEMENTARY SCHOOL SOUTH CLASSROOM - LIBRARY ADDITIONS





# ELEMENTARY SCHOOL SOUTH CLASSROOM - LIBRARY ADDITIONS



**Area B - Classroom Wing Building Pad – Finishing up Structural Piers today,**



# ELEMENTARY SCHOOL SOUTH CLASSROOM - LIBRARY ADDITIONS



**Area B - Classroom Wing Building Pad - Underground  
Utilities Completed This Week**



# ELEMENTARY SCHOOL SOUTH CLASSROOM - LIBRARY ADDITIONS





# ELEMENTARY SCHOOL SOUTH CLASSROOM - LIBRARY ADDITIONS

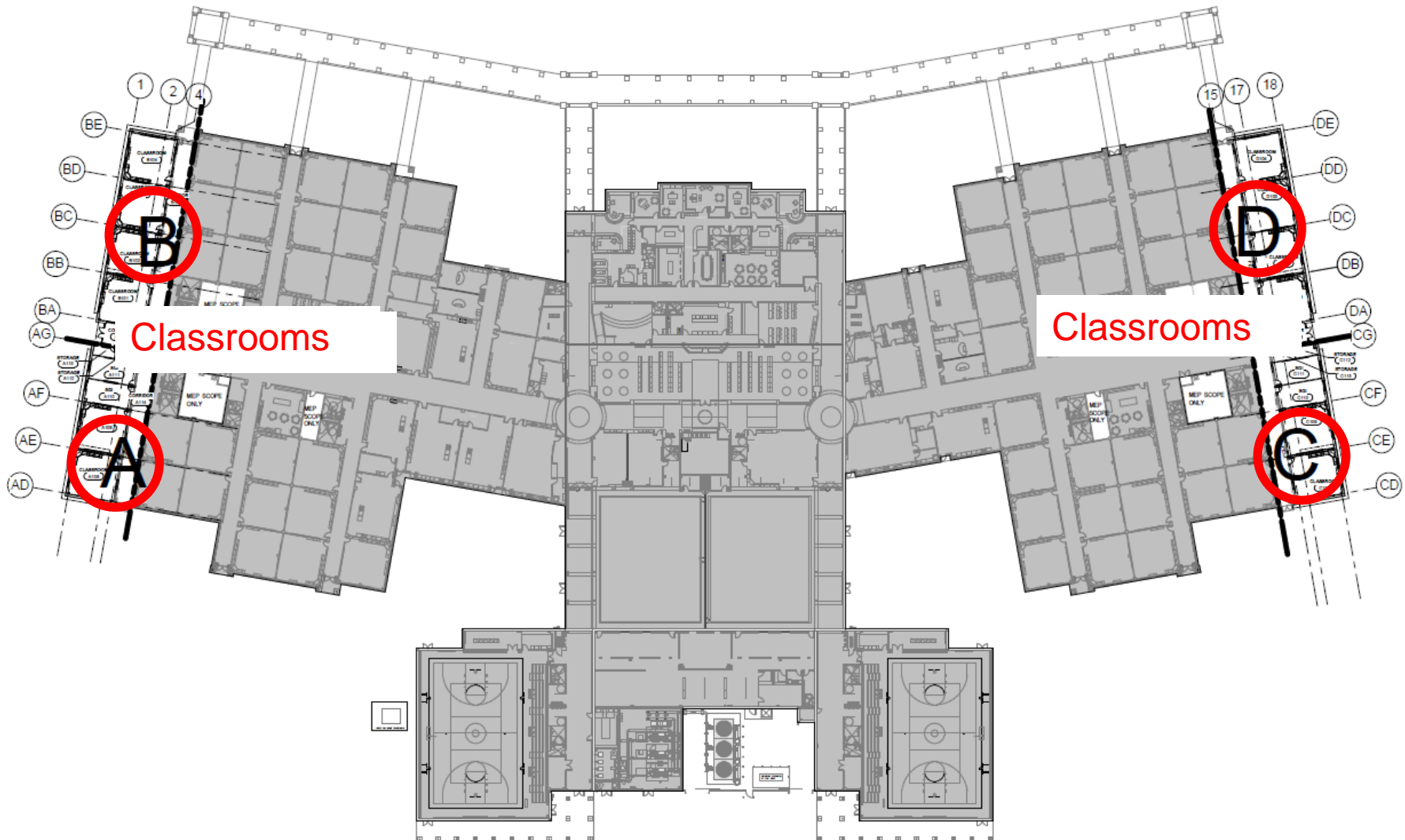


**Area C - Library Wing Building Pad – Also Completing Underground Utilities this Week – Preparing for Structural Slab**





# ACTION ITEM – ELEMENTARY SCHOOL NORTH CLASSROOM ADDITIONS





# ELEMENTARY SCHOOL NORTH CLASSROOM ADDITIONS



**Areas A & B – Classroom West Wing Building Pad – Complete; All Underground Utilities Complete – Grade Beams This Week; Pour Slab Following Week**





# ELEMENTARY SCHOOL NORTH CLASSROOM ADDITIONS





# ELEMENTARY SCHOOL NORTH CLASSROOM ADDITIONS





# ELEMENTARY SCHOOL NORTH CLASSROOM ADDITIONS





# ELEMENTARY SCHOOL NORTH CLASSROOM ADDITIONS



Areas C & D – Classroom East Wing Building Pad



# ELEMENTARY SCHOOL NORTH CLASSROOM ADDITIONS



Areas C & D – Vapor Barrier in Place – Grade Beams Poured this week; Structural Slab Poured Saturday



## PROJECT SCHEDULE

### **COMPLETE** - Package 1: Demolition, Earthwork, Building Pad and Underground Utilities

- Demolition – Complete

January 15<sup>th</sup> – March 15<sup>th</sup> 2020

### **COMPLETE** - Package 2: Foundation, Structural Steel Purchase and MEP Underslab

- Building Pad: Completed on Schedule:
- Drill & Pour Foundation Piers/Grade Beams Complete:
  - *PCI to give status update of project time line*

### Package 3: Remaining Building Package

- Construction Documents Issue for Proposal: Complete April 6<sup>th</sup> 2020
- Issue for Permit: Complete April 9<sup>th</sup> 2020
- Develop GMP present to BOT for Approval/Award: Complete May 18<sup>th</sup> 2020
- Construction Start - Substantial Completion: May 19<sup>th</sup> 2020 - June 15<sup>th</sup> 2021
- Move – In: July 15<sup>th</sup> 2021





# BOND 2017 – LEADERSHIP SUPPORT CENTER



Aerial - Structural Steel Frame and Metal Roof Decking Area C



# BOND 2017 – LEADERSHIP SUPPORT CENTER



Aerial - Structural Steel Frame & Decking





# BOND 2017 – LEADERSHIP SUPPORT CENTER





# BOND 2017 – LEADERSHIP SUPPORT CENTER



Aerial - Structural Steel Frame – Main Entry



# BOND 2017 – LEADERSHIP SUPPORT CENTER





# BOND 2017 – LEADERSHIP SUPPORT CENTER





# BOND 2017 – LEADERSHIP SUPPORT CENTER





# BOND 2017 – LEADERSHIP SUPPORT CENTER





# BOND 2017 – LEADERSHIP SUPPORT CENTER





# BOND 2017 – LEADERSHIP SUPPORT CENTER





# BOND 2017 – LEADERSHIP SUPPORT CENTER





# BOND 2017 – LEADERSHIP SUPPORT CENTER



**Metal Roof Decking Area C – Duct Work Installation in Progress;  
Exterior Light Gauge Steel Framing in Progress**



# BOND 2017 – LEADERSHIP SUPPORT CENTER





# BOND 2017 – LEADERSHIP SUPPORT CENTER





# BOND 2017 – LEADERSHIP SUPPORT CENTER





# BOND 2020 – INTERMEDIATE SCHOOLS NORTH & SOUTH

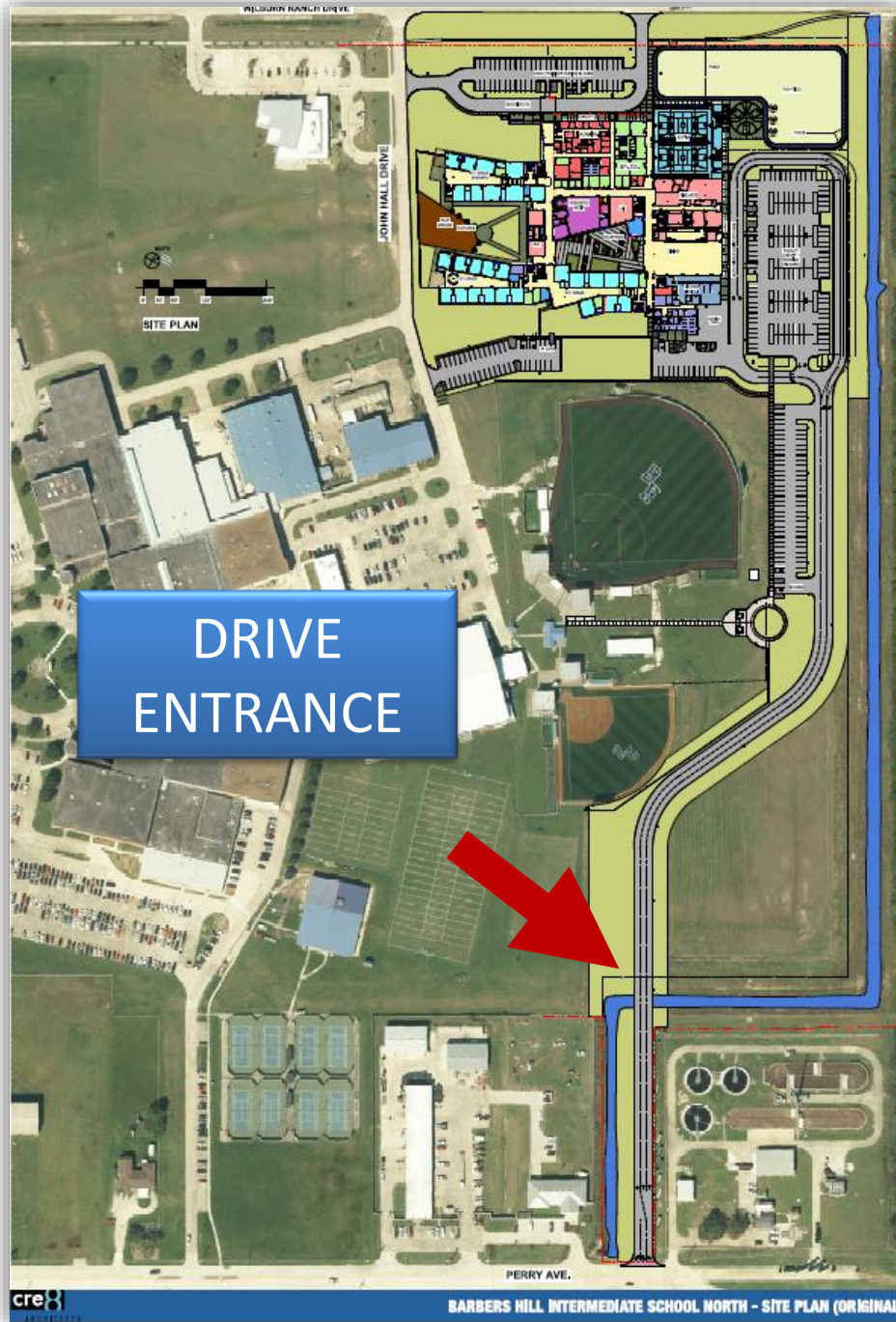




# BOND 2020 – INTERMEDIATE SCHOOL NORTH – MAIN ENTRY







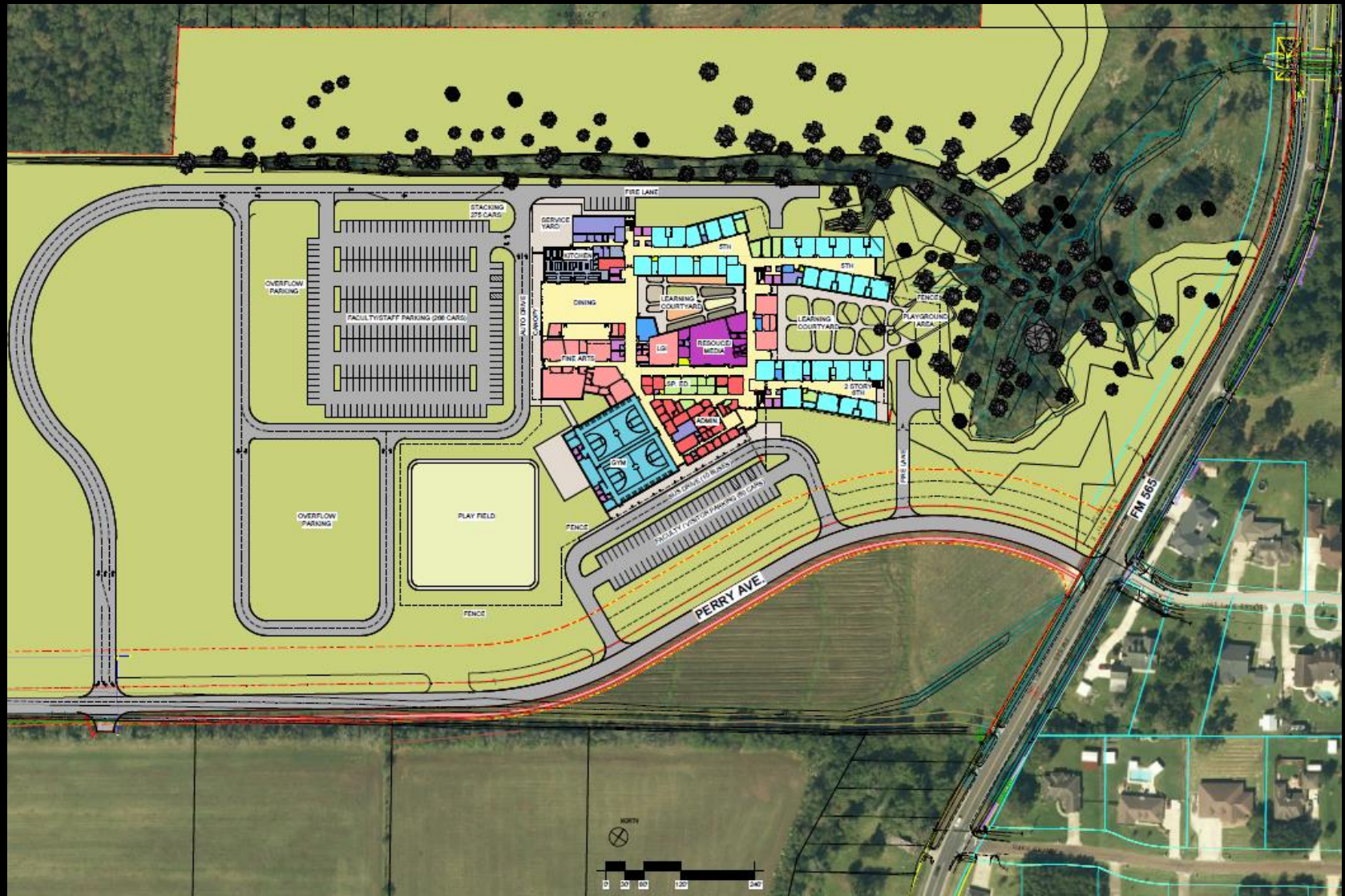


# BOND 2020 – INTERMEDIATE SCHOOL SOUTH – MAIN ENTRY





# BOND 2020 – INTERMEDIATE SCHOOL SOUTH - SITE PLAN







Thank You