



**BARBERS HILL**  
*Independent School District*  
**Projects Update**  
March 28, 2022

**BHISD Bond Projects: Intermediate North, Intermediate South, Bond 2020 Procurement**



# BOND 2020 – INTERMEDIATE SCHOOL NORTH - SITE PLAN





# BOND 2020 – INTERMEDIATE SCHOOL NORTH – SITE PLAN





# BOND 2020 – INTERMEDIATE SCHOOL NORTH





# BOND 2020 – INTERMEDIATE SCHOOL NORTH





# BOND 2020 – INTERMEDIATE SCHOOL NORTH





# BOND 2020 – INTERMEDIATE SCHOOL NORTH





# BOND 2020 – INTERMEDIATE SCHOOL NORTH





# BOND 2020 – INTERMEDIATE SCHOOL NORTH





# BOND 2020 – INTERMEDIATE SCHOOL NORTH



4<sup>TH</sup> – 5<sup>TH</sup> GRADE CLASSROOM WING VIEW LOOKING NORTH



# BOND 2020 – INTERMEDIATE SCHOOL NORTH



4<sup>TH</sup> – 5<sup>TH</sup> GRADE CLASSROOM WING VIEW LOOKING N.E.



# BOND 2020 – INTERMEDIATE SCHOOL NORTH



6<sup>TH</sup> GRADE WING, VIEW LOOKING EAST



# BOND 2020 – INTERMEDIATE SCHOOL NORTH



6<sup>TH</sup> GRADE WING, VIEW LOOKING SE



# BOND 2020 – INTERMEDIATE SCHOOL NORTH





# BOND 2020 – INTERMEDIATE SCHOOL NORTH





# BOND 2020 – INTERMEDIATE SCHOOL NORTH





# BOND 2020 – INTERMEDIATE SCHOOL NORTH





# BOND 2020 – INTERMEDIATE SCHOOL NORTH





## BOND 2020 – INTERMEDIATE SCHOOL NORTH





## BOND 2020 – INTERMEDIATE SCHOOL NORTH





# BOND 2020 – INTERMEDIATE SCHOOL NORTH



Typical ceiling grid and mechanical duct work – through all areas





## BOND 2020 – INTERMEDIATE SCHOOL NORTH





## BOND 2020 – INTERMEDIATE SCHOOL NORTH





# BOND 2020 – INTERMEDIATE SCHOOL NORTH





## BOND 2020 – INTERMEDIATE SCHOOL NORTH



cre8 Application of final stucco coat typical to upper fascia and soffits



# BOND 2020 – INTERMEDIATE SCHOOL NORTH



Installation of exterior aluminum window frame mullions, Z-girts typical at exterior metal panel sidewalls and metal framing for sloped soffit





# BOND 2020 – INTERMEDIATE SCHOOL SOUTH - SITE PLAN



## INTERMEDIATE SCHOOL SOUTH





W 31° 21' 42" E  
1350.07'

OVERFLOW PARKING

PARKING 275 CARS

PACULTY/STAFF PARKING 200 CARS

WELDING WIRE FENCE

PLAY FIELD

WELDING WIRE FENCE

LIBRARY

STUDENT CENTER

ACADEMIC CENTER

RESEARCH CENTER

ATHLETIC CENTER

ARTS CENTER

SCIENCE CENTER

COMPUTER CENTER

UNIVERSITY OF NORTH CAROLINA AT CHARLOTTE



# BOND 2020 – INTERMEDIATE SCHOOL SOUTH





# BOND 2020 – INTERMEDIATE SCHOOL SOUTH





# BOND 2020 – INTERMEDIATE SCHOOL SOUTH





# BOND 2020 – INTERMEDIATE SCHOOL SOUTH





# BOND 2020 – INTERMEDIATE SCHOOL SOUTH





# BOND 2020 – INTERMEDIATE SCHOOL SOUTH





# BOND 2020 – INTERMEDIATE SCHOOL SOUTH



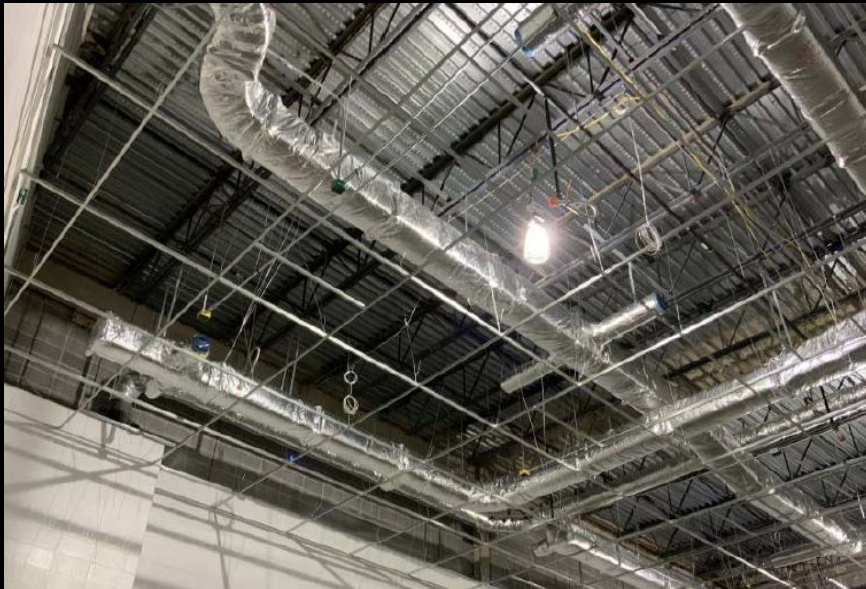


# BOND 2020 – INTERMEDIATE SCHOOL SOUTH





# BOND 2020 – INTERMEDIATE SCHOOL SOUTH





# BOND 2020 – INTERMEDIATE SCHOOL SOUTH





## BOND 2020 – INTERMEDIATE SCHOOL SOUTH



cre8 Casework delivery and installation for the classrooms in progress



# BOND 2020 – INTERMEDIATE SCHOOL SOUTH



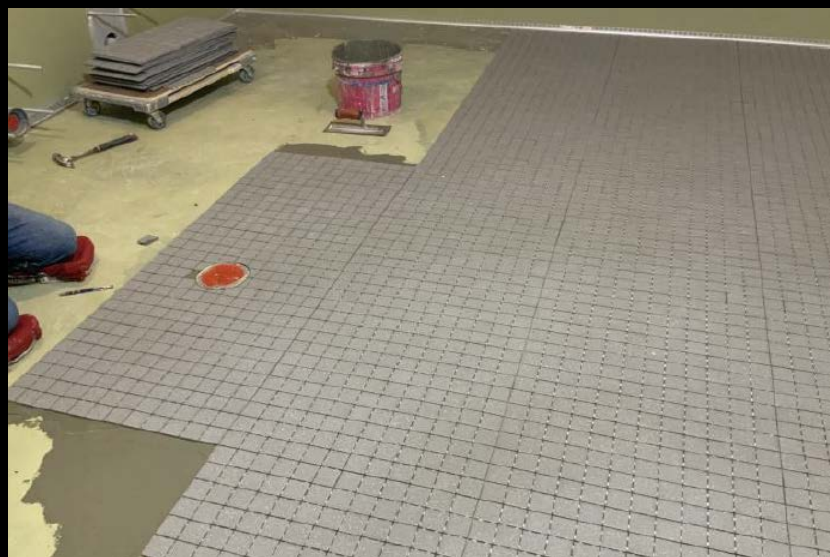


# BOND 2020 – INTERMEDIATE SCHOOL SOUTH





# BOND 2020 – INTERMEDIATE SCHOOL SOUTH





# BOND 2020 – INTERMEDIATE SCHOOL SOUTH



cre8 Upper brick wall complete - torch applied cap sheet to metal flashing,  
metal coping and gravel stop installation in progress near completion



An aerial photograph of a suburban neighborhood. In the foreground, there are green lawns, trees, and a large, rectangular, light-colored sandy area, possibly a sports field or a construction site. The middle ground shows a dense residential area with houses, streets, and more trees. In the background, a large body of water, likely a lake or a wide river, stretches across the horizon under a clear sky. The text "THANK YOU" is overlaid in the center of the image.

**THANK YOU**