



Projects Update

December 12, 2022



BHISD Bond Projects: Transportation Center Renovations – Fuel Station and Building; Action Item – Replacement Chillers at Primary DAEP & KC Addition; HS Addition Update



BOND 2020: Becky Nelson Transportation Center Renovation Project



BOND 2020: Becky Nelson Transportation Center Renovation Project



BOND 2020: Becky Nelson Transportation Center Renovation Project



BOND 2020: Becky Nelson Transportation Center Renovation Project



BOND 2020: Becky Nelson Transportation Center Renovation Project



BOND 2020: Becky Nelson Transportation Center Renovation Project



Fuel Station is operational for liquid fuels, propane tank is waiting on the Railroad Commission inspection this week.



BOND 2020: Becky Nelson Transportation Center Renovation Project



BOND 2020: Becky Nelson Transportation Center Renovation Project



BOND 2020: Becky Nelson Transportation Center Renovation Project



BOND 2020: Becky Nelson Transportation Center Renovation Project



BOND 2020: Becky Nelson Transportation Center Renovation Project



BOND 2020: Becky Nelson Transportation Center Renovation Project



West Training Room View



East Training Room View

**Rendering of Completed Transportation Center Offices:
Training Room views – separated by Operable Wall**

BOND 2020: Becky Nelson Transportation Center Renovation Project



Installation in progress for horizontal wall panel green girts and semi-rigid insulation on external building envelope.



BOND 2020: Becky Nelson Transportation Center Renovation Project



BOND 2020: Becky Nelson Transportation Center Renovation Project



BOND 2020: Becky Nelson Transportation Center Renovation Project



Installation in progress metal siding and soffit. Bollards installed.



BOND 2020: Becky Nelson Transportation Center Renovation Project



BOND 2020: Becky Nelson Transportation Center Renovation Project



BOND 2020: Becky Nelson Transportation Center Renovation Project



BOND 2020: Becky Nelson Transportation Center Renovation Project



BOND 2020: Becky Nelson Transportation Center Renovation Project



BOND 2020: Becky Nelson Transportation Center Renovation Project



BOND 2020: Becky Nelson Transportation Center Renovation Project



BOND 2020: Becky Nelson Transportation Center Renovation Project



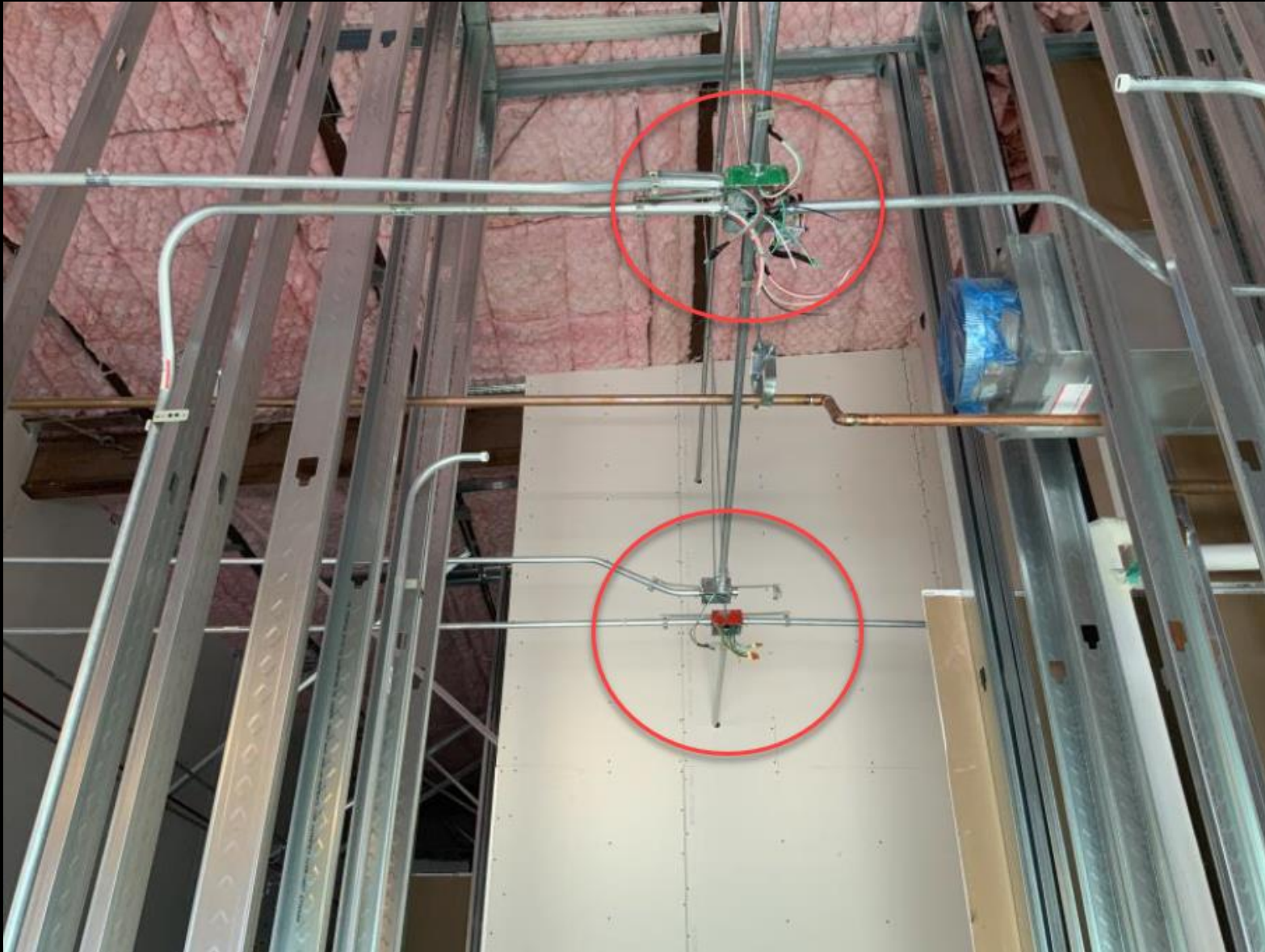
BOND 2020: Becky Nelson Transportation Center Renovation Project



BOND 2020: Becky Nelson Transportation Center Renovation Project



BOND 2020: Becky Nelson Transportation Center Renovation Project



BOND 2020: Becky Nelson Transportation Center Renovation Project



Installed electrical transformer and pulling of wires into electrical panels:



Interior and exterior hose bib installed in mechanical room:

BOND 2020: Becky Nelson Transportation Center Renovation Project



BOND 2020: Becky Nelson Transportation Center Renovation Project



HIGH SCHOOL ADDITIONS UPDATE PRESENTATION

CRE8

Barbers Hill High School Addition | **Schematic Design** 12 December 2022
Barbers Hill Independent School District



ARCHITECTS





Board of Trustees

Eric Davis	President
Clint Pipes	Vice President
Benny May	Secretary
George Barrera	Member
Fred Skinner	Member
Becky Tice	Member
Mark Wilson	Member

Administration

Dr. Greg Poole	Superintendent	Rick Kana	Executive Director of Operations
Sandra Duree	Deputy Superintendent	Stephanie Martin	Assistant Superintendent
Becky McManus	Assistant Superintendent Finance		Special Services
Barbara Ponder	Assistant Superintendent Personnel	Carl Abseck	Athletic Director
Stanley Frazier	Assistant Superintendent Planning and Operations	Jami Navarre	Community Relations
Patrick Hendricks	Director of Facilities, Construction & Maintenance	David Bloom	Director of Communications
		Becky Johnson	Director of Operations
		Adeena Henning	Director of School Nutrition
		Kristen Davis	Director of Technology
		Shane McBride	Chief of Police

Design Participants

Carl Abseck	Stan Frazier	Stephanie Martin	cre8 Architects
Chris Brannan	Cassidy Gardner	Tina McCorkle	George Watanabe
Phillip Bologna	Cynthia Giles	Richard Miles	Jerry Bevel
Maggie Cervantes-Rivers	Colleen Goundrey	Lance Murphy	Mike Huang
Megan Dow	Cayla Hunt	Brandon Otto	Amber Moncla
Lacey Eads	Patrick Hendricks	Kelli Rinando	Sergio DeJesus
Kristin Elliott	Beth Hutchison	Kari Sager	
Curtis Ellis	Jennifer Jones	Kristie Thompson	

Copyright © 2022 cre8 architects This document and the ideas and designs incorporated herein, as an instrument of professional service, is the property of cre8 architects, and is not to be used, in whole or in part for any project without the written authorization of cre8 architects.

12 December 2022

cre8 Architects is pleased to submit the Schematic Design for the Barbers Hill High School Addition. The Schematic Design Documents illustrate the conceptual design for the project.

Schematic Design

The schematic design addresses the requirements for the high school addition which was developed during campus planning sessions. The Program determined the function, area and quantity of spaces required in the new addition. The methodology used in the Schematic Design process can be characterized as a collaboration that included many stakeholders of the project. The conceptual design process that followed organized the required spaces into plan configurations that were analyzed and evaluated. Out of this process a design solution was developed and presented to committee participants for consideration and discussion. The design presented here reflects input from various district representatives and will be used as the basis for further development of the project.

Project Goals

The stakeholders, made up of administrators, faculty, and support services, identified project goals during the interview process which became integral to the design solution for the new primary school.

- Enable the use of teaching methods with shared spaces and flexible instructional areas
- Provide services and facilities to support technology
- Create instructional and learning opportunities outside of the four walls of a classroom
- Support and reinforce the local community spirit
- Express the District and Community culture in the building design

- Make the campus secure and safe for the students and staff
- The building will be energy efficient
- Incorporate sustainable materials in the construction of the building that are durable and easily maintained
- Provide a framework for future additions to accommodate anticipated growth

We thank Barbers Hill ISD for the opportunity to design the high school addition and share the many committee participants' vision, excitement, and anticipation as this facility becomes a reality. The knowledge, enthusiasm and dedication to excellence in the education of the students is inspiring and we are grateful to be a part of this experience.

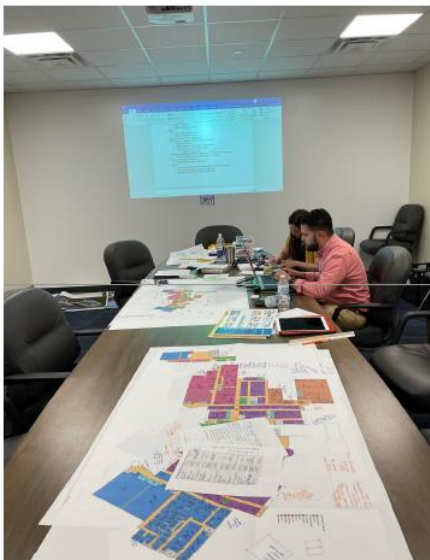
We look forward to continuing the design process into the Design Development Phase of the Barbers Hill High School addition.

cre8ively,



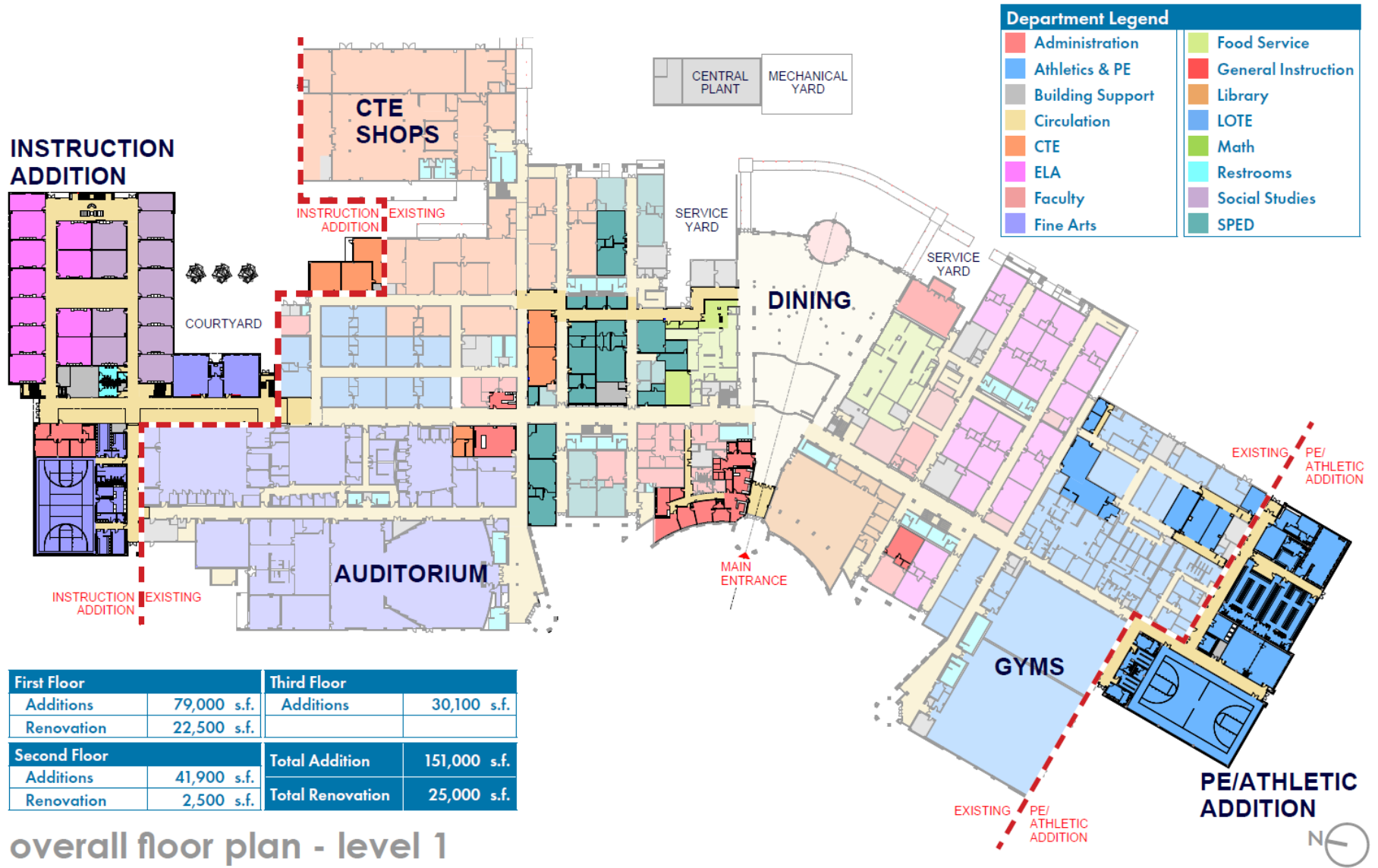
George Watanabe

planning charrette





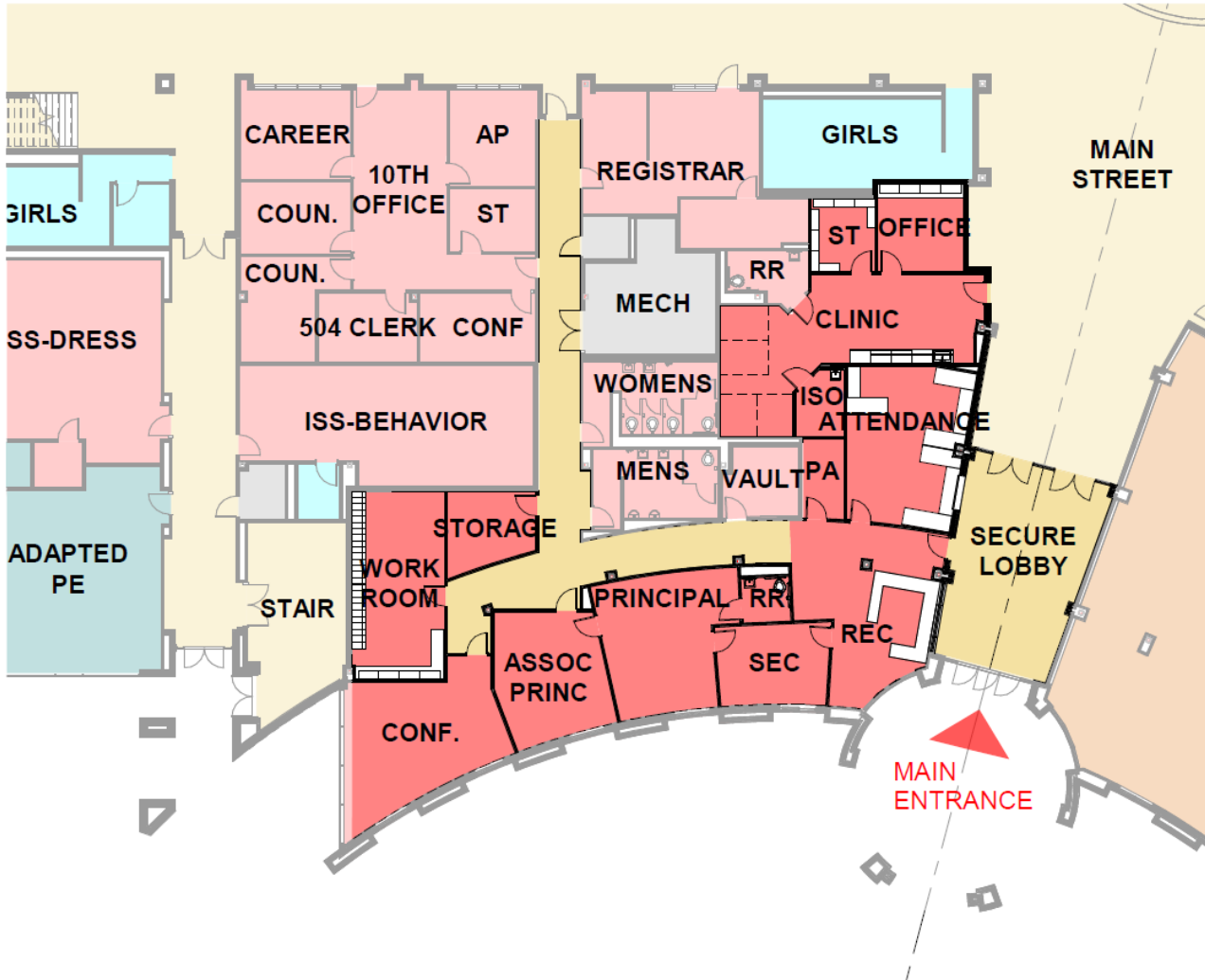






Department Legend			
Administration	Food Service	General Instruction	
Athletics & PE	Library	LOTE	
Building Support	Math	Restrooms	
Circulation	Restrooms	Social Studies	
CTE	Social Studies	SPED	
ELA	SPED		
Faculty			
Fine Arts			

instruction addition
partial floor plan - level 1



Department Legend	
Administration	Food Service
Athletics & PE	General Instruction
Building Support	Library
Circulation	LOTE
CTE	Math
ELA	Restrooms
Faculty	Social Studies
Fine Arts	SPED

administration modifications partial floor plan - level 1





Department Legend	
Administration	Food Service
Athletics & PE	General Instruction
Building Support	Library
Circulation	LOTE
CTE	Math
ELA	Restrooms
Faculty	Social Studies
Fine Arts	SPED



pe/athletic addition
partial floor plan - level 1



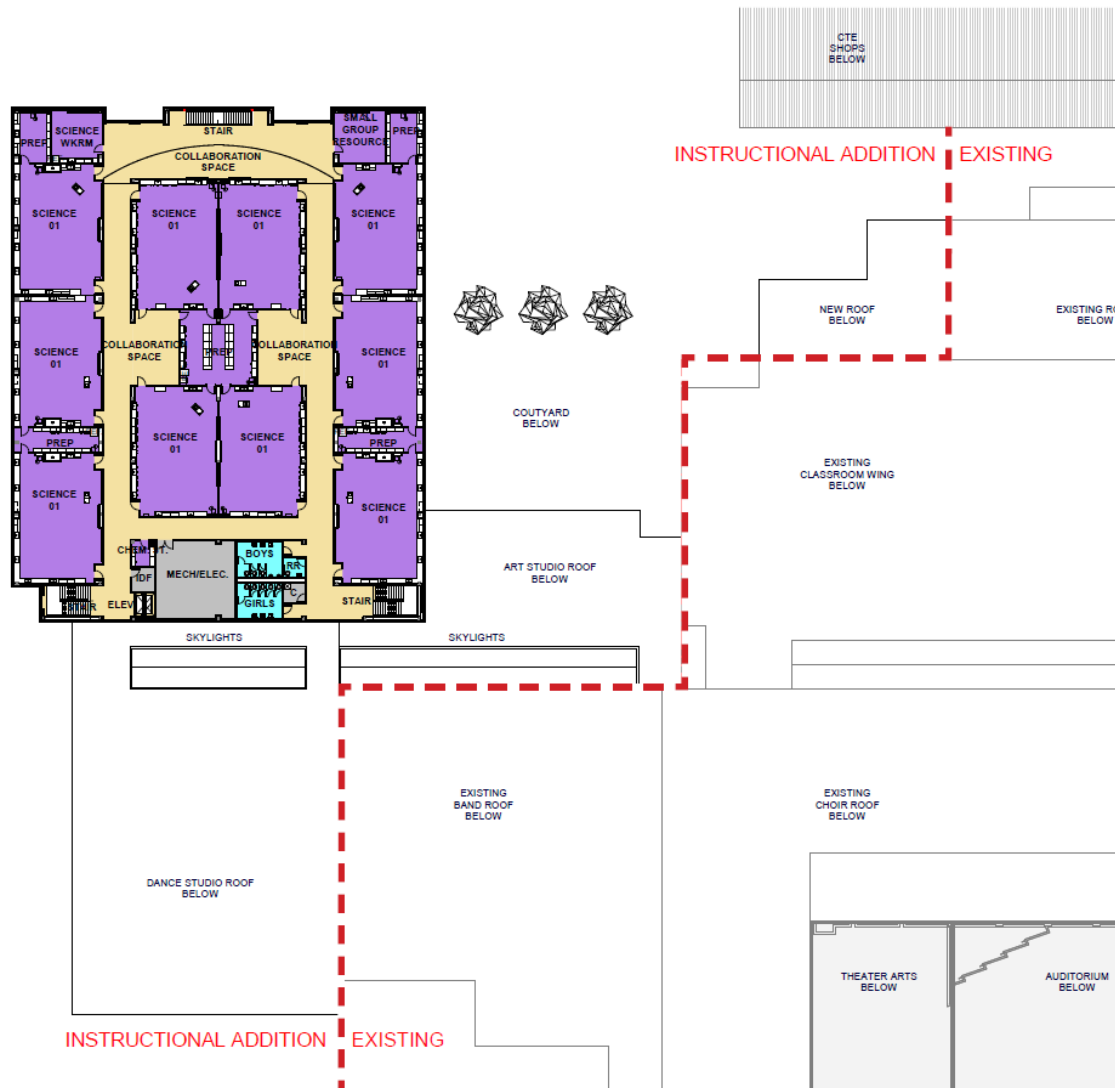


Department Legend			
Administration	Fine Arts	General Instruction	Math
Athletics & PE			Restrooms
Building Support			Science
Circulation			Social Studies
CTE			
Faculty			



instruction addition partial floor plan - level 2





Department Legend	
	Building Support
	Circulation
	Restrooms
	Science



instruction addition partial floor plan - level 3

conceptual design images

17



instruction addition - north entrance



pe/athletic addition - athletics entrance

19



instruction addition - main street

20



instruction addition - collaboration area

21



instruction addition - view from north

project schedule and statement of probable cost

Programming - Complete

Schematic Design – Complete

Design Development – October 10, 2022 thru January 23, 2023

Review Revit/Enscape model with BHHS

75% DD due

ISSUE FOR BUDGET ESTIMATE (2 Weeks)

November, 2022

December 5, 2022

December 6, 2022 thru

December 20, 2022

January 13, 2023

January 16, 2023 thru

January 17, 2023

January 20, 2023

January 23, 2023

100% DD due

Review DD Documents with District

ISSUE DD DOCUMENTS

DD Board Presentation

Construction Documents – January 23, 2023 thru July 6, 2023

ISSUE FOR BUDGET ESTIMATE (2 Weeks) – 65% CD

ISSUE FOR BUDGET ESTIMATE (2.5 Weeks) – 95% CD

Review CD Documents with District

ISSUE CD DOCUMENTS

March 6, 2023 thru March 20, 2023

June 5, 2023 thru June 22, 2023

May 15, 2023 thru May 17, 2023

July 6, 2023

Bidding-Proposals – July 6, 2023 thru August 28, 2023

First Advertisement

Bid Documents Released to Proposers

Second Advertisement

Pre-Proposal Conference

Receive Proposals

Review GMP with BHISD

GMP Approval by Board of Trustees

July 1, 2023

July 6, 2023

July 8, 2023

July 20, 2023

August 3, 2023

August 18, 2023

August 28, 2023

Construction (NEW) – August 22, 2023 thru July 14, 2025

Notice to Proceed

* Separate early work packages may be required for phasing, material purchasing, summer work

Substantial Completion of Construction (21 months)

Final Completion of Construction

August 28, 2023*

May 23, 2025

July 14, 2025

Construction (PHASE 01 SUMMER RENOVATION) – May 23, 2024 thru August 14, 2024

Substantial Completion of Construction

Final Completion of Construction

August 5, 2024

August 14, 2024

Construction (PHASE 02 SUMMER RENOVATION) – May 23, 2025 thru August 14, 2025

Substantial Completion of Construction

Final Completion of Construction

August 3, 2025

August 14, 2025

Post Construction

Warranty Inspection

July 2024/February 2025/June 2025

Statement of Probable Cost

ITEM	AREA (SF)	COST/SF	TOTAL
NEW STUDENT PARKING	0	\$ -	\$ -
NEW ADDITION			
GYM & FOOTBALL ADDITION	27,000	\$ 450.00	\$ 12,150,000.00
DANCE ADDITION	8,800	\$ 450.00	\$ 3,960,000.00
MAIN STREET ADDITION	8,100	\$ 450.00	\$ 3,645,000.00
OFFICE & CLASSROOM ADDITION	107,100	\$ 345.00	\$ 36,949,500.00
DESIGN/ESCALATION CONTINGENCY			\$ 1,375,000.00
NEW ADDITION TOTAL			\$ 58,079,500.00
INTERIOR MODIFICATIONS/RENOVATIONS	28,000	\$ 195.00	\$ 5,460,000.00
TOTAL PROBABLE CONSTRUCTION COST			\$ 63,539,500.00
TOTAL PROBABLE SOFT COSTS (18%)			\$ 11,437,110.00
TOTAL PROBABLE PROJECT COST			\$ 74,976,610.00

Our next step:

design development!

- layout of building structure
- routing of MEP systems
- identification of wall construction, materials and colors
- finalize roof slopes and develop details
- space (room) layouts
- data and electrical locations
- reflected ceiling plans/lighting configurations
- exterior elevation drawings
- foodservice layout for kitchen
- detention calculations
- landscape plan
- furniture plans
- statement of probable cost





THANK YOU