



**BARBERS HILL**  
*Independent School District*  
**Projects Update**  
October 25, 2021

**BHISD Bond Projects:**  
**LSC – KC Corridor Demolition - Auxiliary Field - Intermediate School North and South**



In **June 2011** our Board of Trustees approved hiring an Energy Manager (Ricky Shelton) allowing us to start an Energy Management Department. In ten years of Energy Conservation and strategic best practices, BHISD has lowered the cost per Sq.Ft. from **\$1.24 to \$0.90**. While adding 560,608 Sq.Ft. since then (+31%), the District is paying only <3% more today than 10 years ago. A savings of **\$612,688** for this past year.

2010-2011	Cost per Sq. Ft.	2020-2021	Cost per Sq. Ft.
High School	\$1.46	High School	\$.83
Intermediate	\$1.05	Middle South	\$.77
Middle North	\$1.34	Middle North	\$1.34
Elementary South	\$.87	Elementary South	\$.93
Primary	\$1.16	Elementary North	\$.78
Kindergarten	\$1.55	Pre-K	\$.85
		Early Childhood Center	\$.78
		Multi-Purpose Building	\$.93
Average Cost per Sq. Ft.	\$1.24	Average Cost per Sq. Ft.	\$.90

### Going Forward: Electrical Contracts with TASB Energy Cooperative / Direct Energy:

- **June 2021 – June 2024** cost per KWH is .04494 \*\*\**Current Market Rate: .0623* (highest in 15 years); from the previous contract equals a savings of **\$170,000** per yr./ **\$510,600** life of contract;
- **June 2024 – June 2027** cost per KWH will lower to .0374; this price was locked in January several weeks before Winter Storm Uri. Savings per year equals an additional **\$172,500** per yr./**\$690,000** for contract;
- Through proactive management with Demand Response & 4CP **CenterPoint** line charges, we've lowered that portion of our energy bill (typically 50% of total bill) to **38%**; Est. savings for 2021: **\$408,560**

### REASONS FOR CONTINUED ENERGY MANAGEMENT SUCCESS:

- Maintaining occupant comfort as a priority in executing the energy management program;
- Collaboration in working with the Maintenance Department: HVAC and Electrical as well as Operations;
- Participation in New Construction & Renovations: both planning & commissioning of projects;
- Regular communication and feedback with Principals and campus staff regarding building efficiencies;
- TEMA (Texas Energy Managers Association) Professional Development;
  - The District has four Accredited Texas Energy Managers in the Dept. of Planning & Operations;
  - State TEMA Board Participation: Ricky Shelton is currently Vice President of the State Board; just named President of the new TEMA Beaumont Chapter to help start it.





# BOND 2017 – Leadership Support Center





# BOND 2017 – Leadership Support Center



# BOND 2017 – Leadership Support Center





# BOND 2017 – Leadership Support Center





# BOND 2017 – Leadership Support Center





# BOND 2017 – Leadership Support Center





# BOND 2017 – Leadership Support Center





# BOND 2017 – Leadership Support Center





# BOND 2017 – Leadership Support Center





## BOND 2017 – Leadership Support Center

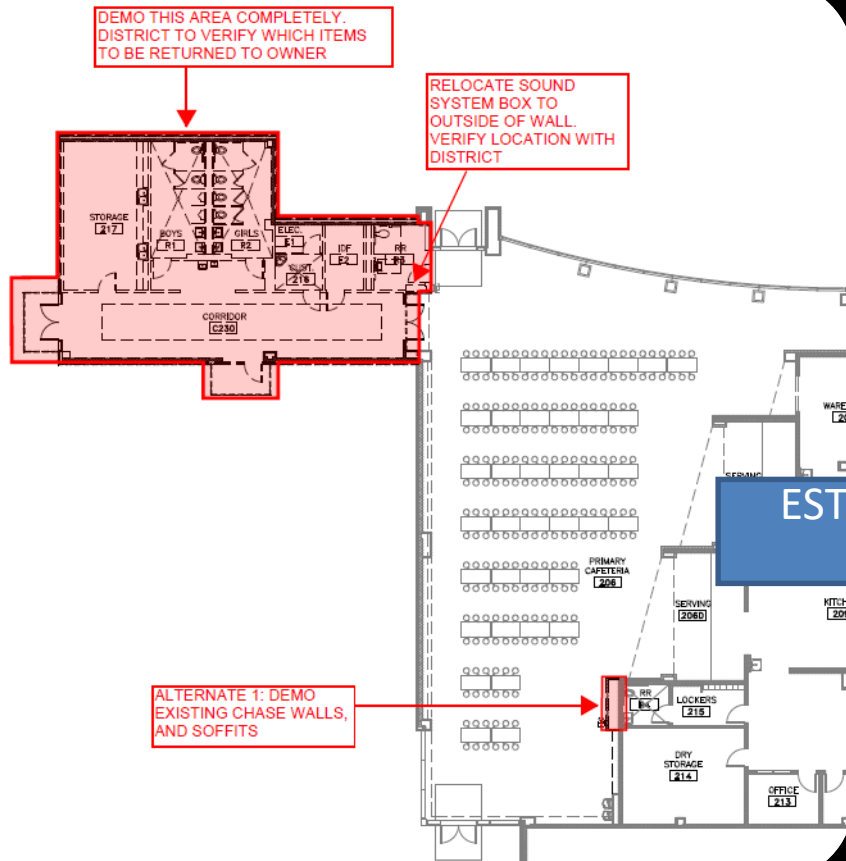




# BOND 2017 – Leadership Support Center



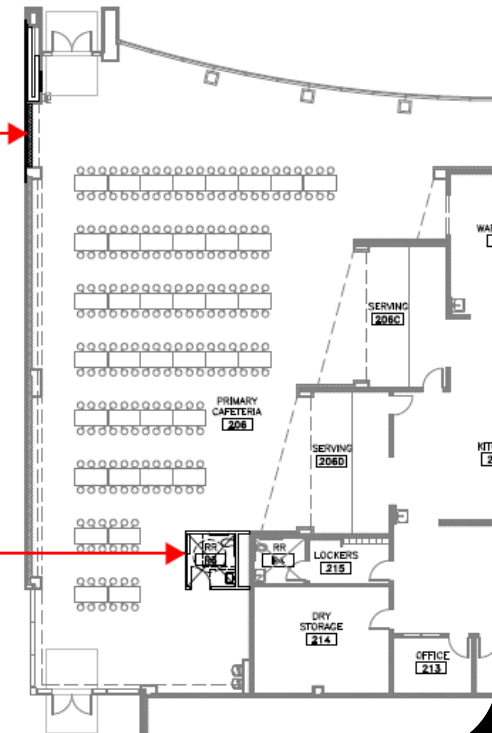
# BOND 2017 – Leadership Support Center



EST. COMPLETION 2-MONTHS

INFILL WITH BRICK AND CMU

ALTERNATE 1:  
NEW UNISEX RESTROOM  
- ALL FIXTURES TO BE OFCI  
- QUARTZ FLOORING TO BE OFCI  
- ALL GYP WALL TO EXTEND 6" ABOVE CEILING





## BOND 2020 – Auxiliary Field





## BOND 2020 – Auxiliary Field

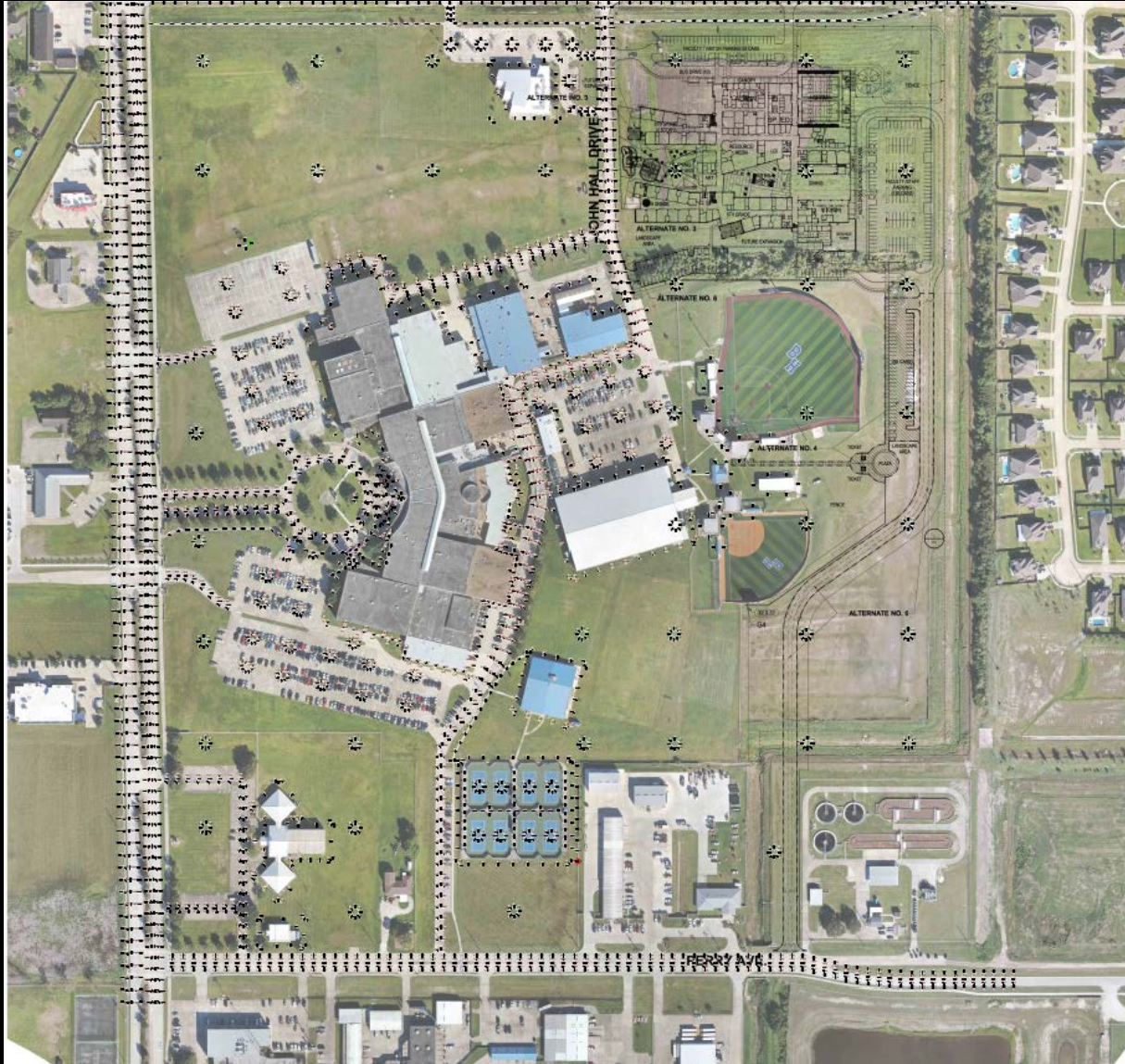


# BOND 2020 – INTERMEDIATE SCHOOL NORTH - SITE PLAN





# BOND 2020 – INTERMEDIATE SCHOOL NORTH – SITE PLAN





# BOND 2020 – INTERMEDIATE SCHOOL NORTH





# BOND 2020 – INTERMEDIATE SCHOOL NORTH



Aerial – Main Entrance Canopy and Visitor Parking at Wilburn Ranch Dr.



# BOND 2020 – INTERMEDIATE SCHOOL NORTH





# BOND 2020 – INTERMEDIATE SCHOOL NORTH





# BOND 2020 – INTERMEDIATE SCHOOL NORTH





# BOND 2020 – INTERMEDIATE SCHOOL NORTH





# BOND 2020 – INTERMEDIATE SCHOOL NORTH





# BOND 2020 – INTERMEDIATE SCHOOL NORTH





## BOND 2020 – INTERMEDIATE SCHOOL NORTH





## BOND 2020 – INTERMEDIATE SCHOOL NORTH





# BOND 2020 – INTERMEDIATE SCHOOL NORTH





## BOND 2020 – INTERMEDIATE SCHOOL NORTH





# BOND 2020 – INTERMEDIATE SCHOOL NORTH





## BOND 2020 – INTERMEDIATE SCHOOL NORTH





## BOND 2020 – INTERMEDIATE SCHOOL NORTH





# BOND 2020 – INTERMEDIATE SCHOOL NORTH





## BOND 2020 – INTERMEDIATE SCHOOL NORTH





# BOND 2020 – INTERMEDIATE SCHOOL NORTH





## BOND 2020 – INTERMEDIATE SCHOOL NORTH





# BOND 2020 – INTERMEDIATE SCHOOL SOUTH - SITE PLAN



## INTERMEDIATE SCHOOL SOUTH





[illegible]



# BOND 2020 – INTERMEDIATE SCHOOL SOUTH





# BOND 2020 – INTERMEDIATE SCHOOL SOUTH





# BOND 2020 – INTERMEDIATE SCHOOL SOUTH





# BOND 2020 – INTERMEDIATE SCHOOL SOUTH





# BOND 2020 – INTERMEDIATE SCHOOL SOUTH





# BOND 2020 – INTERMEDIATE SCHOOL SOUTH





# BOND 2020 – INTERMEDIATE SCHOOL SOUTH





# BOND 2020 – INTERMEDIATE SCHOOL SOUTH





# BOND 2020 – INTERMEDIATE SCHOOL SOUTH





## BOND 2020 – INTERMEDIATE SCHOOL SOUTH





## BOND 2020 – INTERMEDIATE SCHOOL SOUTH





# BOND 2020 – INTERMEDIATE SCHOOL SOUTH





# BOND 2020 – INTERMEDIATE SCHOOL SOUTH



Area A – Exterior Metal Stud Framing at the south admin office wall





# BOND 2020 – INTERMEDIATE SCHOOL SOUTH





# BOND 2020 – INTERMEDIATE SCHOOL SOUTH





# BOND 2020 – INTERMEDIATE SCHOOL SOUTH





## BOND 2020 – INTERMEDIATE SCHOOL SOUTH





## BOND 2020 – INTERMEDIATE SCHOOL SOUTH



Area E – Enclose pipe penetrations at concrete slab in Science Prep Room



## BOND 2020 – INTERMEDIATE SCHOOL SOUTH





# BOND 2020 – INTERMEDIATE SCHOOL SOUTH





## BOND 2020 – INTERMEDIATE SCHOOL SOUTH





# BOND 2020 – INTERMEDIATE SCHOOL SOUTH







# THANK YOU